

Color Name Diagrams for the *The New Munsell Student Color Set*

Jonathan Ferguson
Dept. of Near and Middle Eastern Civilizations
University of Toronto
4 Bancroft Avenue, 2nd Floor
Toronto, Ontario M5S 1C1 Canada
Email: jonathan.ferguson@utoronto.ca
Thursday, August 9th, 2012

The *Munsell Soil-Color Charts* (Munsell Color 2009) were originally designed for soil scientists, but have been adopted by archaeologists for describing color in a variety of contexts, including artifacts. Unfortunately, the range of hues in these charts does not include all the colors encountered in archaeology.

The following charts have been designed especially for archaeologists to insert into *The New Munsell Student Color Set* (Long 2011). For the names on these charts, precedence is always given to those included in the *Munsell Soil-Color Charts* because of their long-standing use in archaeology. Where these do not exist, the ISCC-NBS system is followed (Kelly and Judd 1976), a nomenclature employed by many other disciplines. This compromise will provide archaeologists with an objective color terminology, while remaining consistent with past publications.

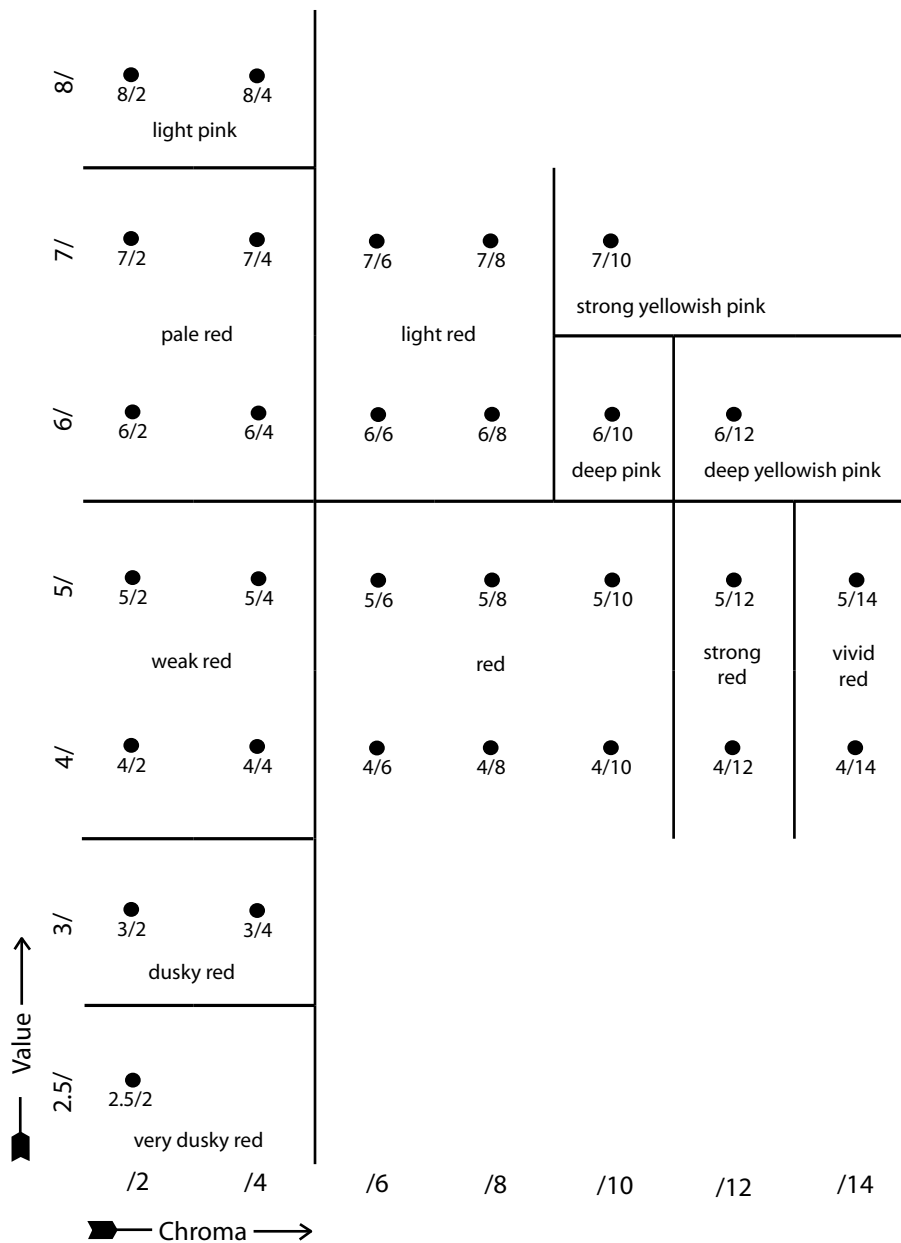
To use these name diagrams, print the file at 100% scale, cut along the outer line of each page, and punch holes through the circles on the right. Then insert each page into *The New Munsell Student Color Set*, facing the appropriate hue page. Color notations can then be matched with names in the same way as in the *Munsell Soil-Color Charts*.

The author hopes that this system proves useful for the communication of color in archaeology (and perhaps other disciplines), and would welcome correspondence at the address above.

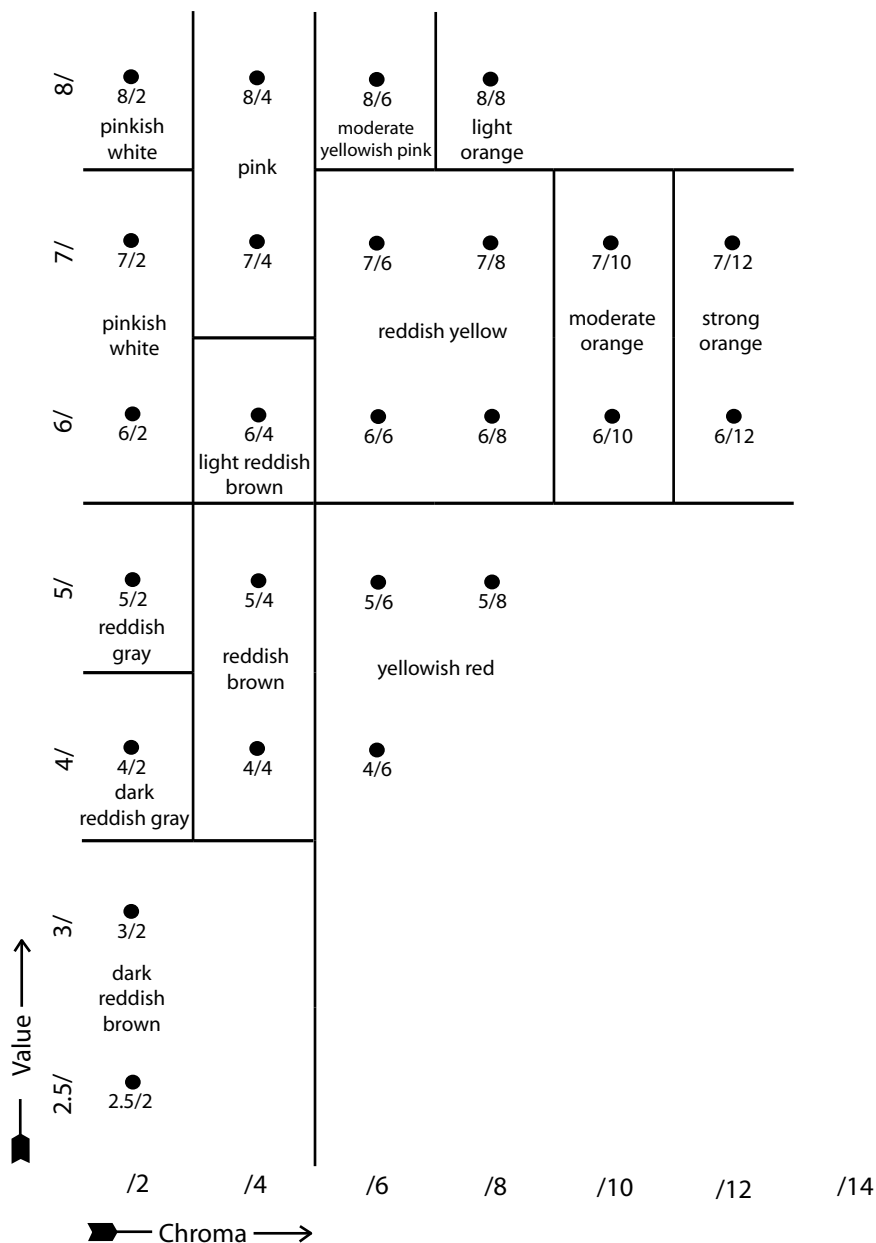
References

- Kelly, K. L., and D. B. Judd. 1976. *Color: Universal Language and Dictionary of Names*. U.S. National Bureau of Standards Special Publication 440. Washington, D.C.: U.S. Department of Commerce.
- Long, J. T. 2011. *The New Munsell Student Color Set*. New York: Fairchild Books.
- Munsell Color. 2009. *Munsell Soil-Color Charts*. Grand Rapids, Michigan: Munsell Color.

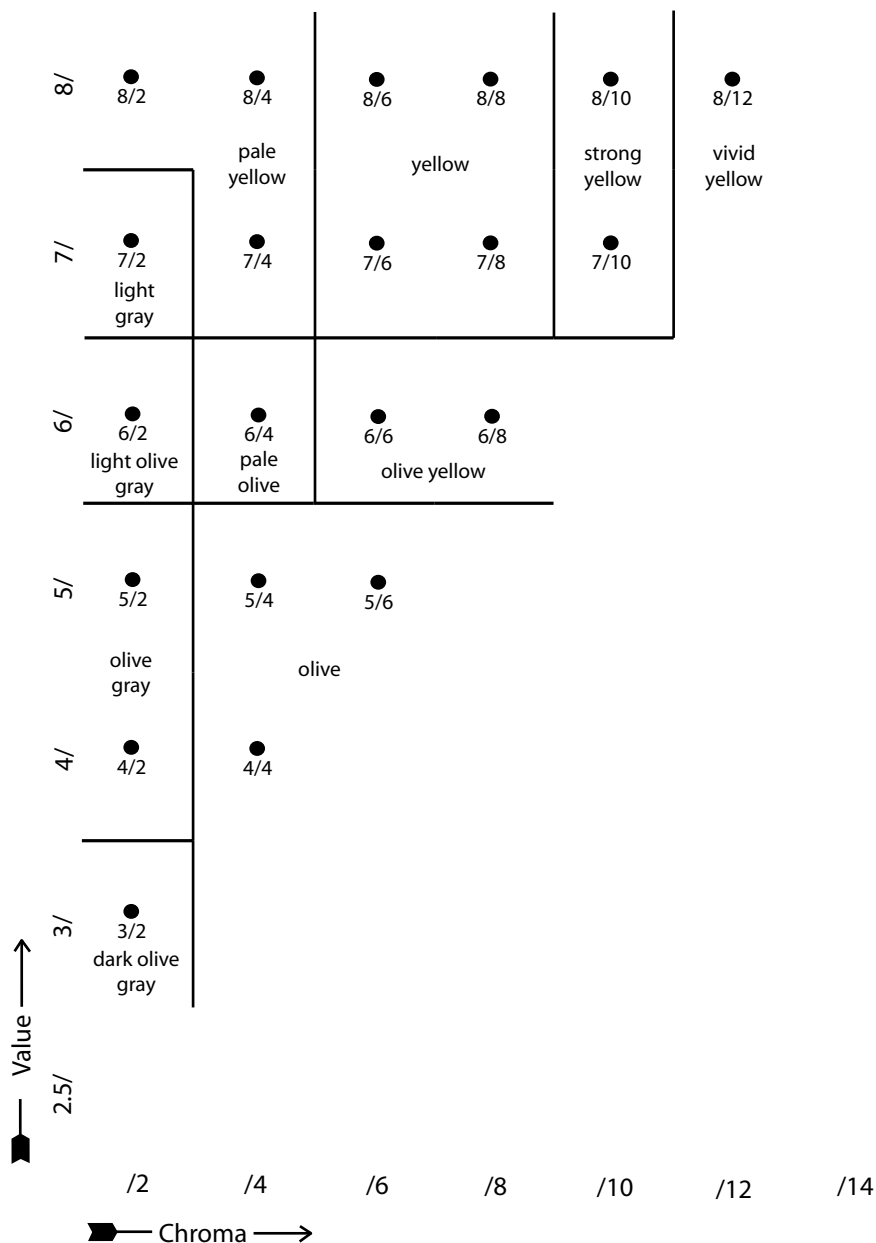
Hue: 5R



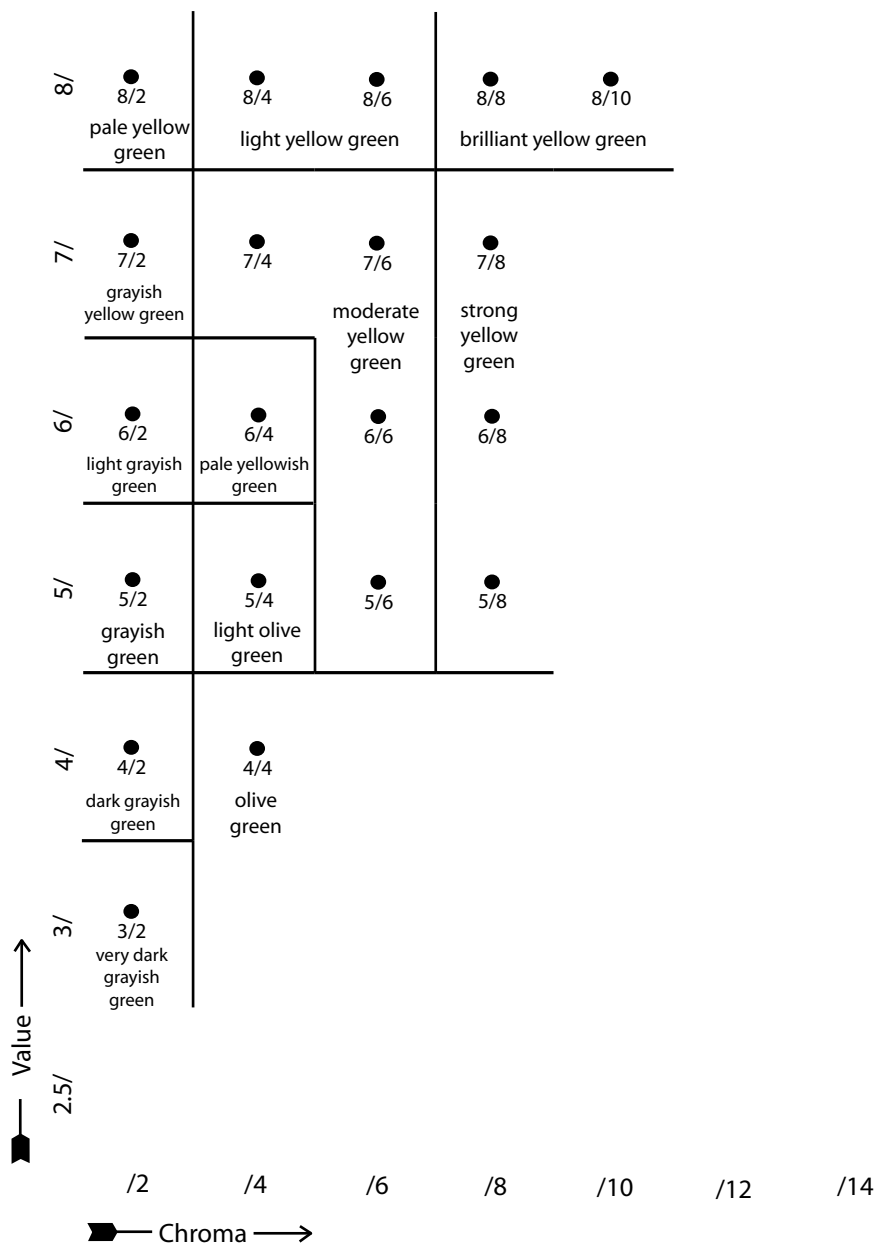
Hue: 5YR



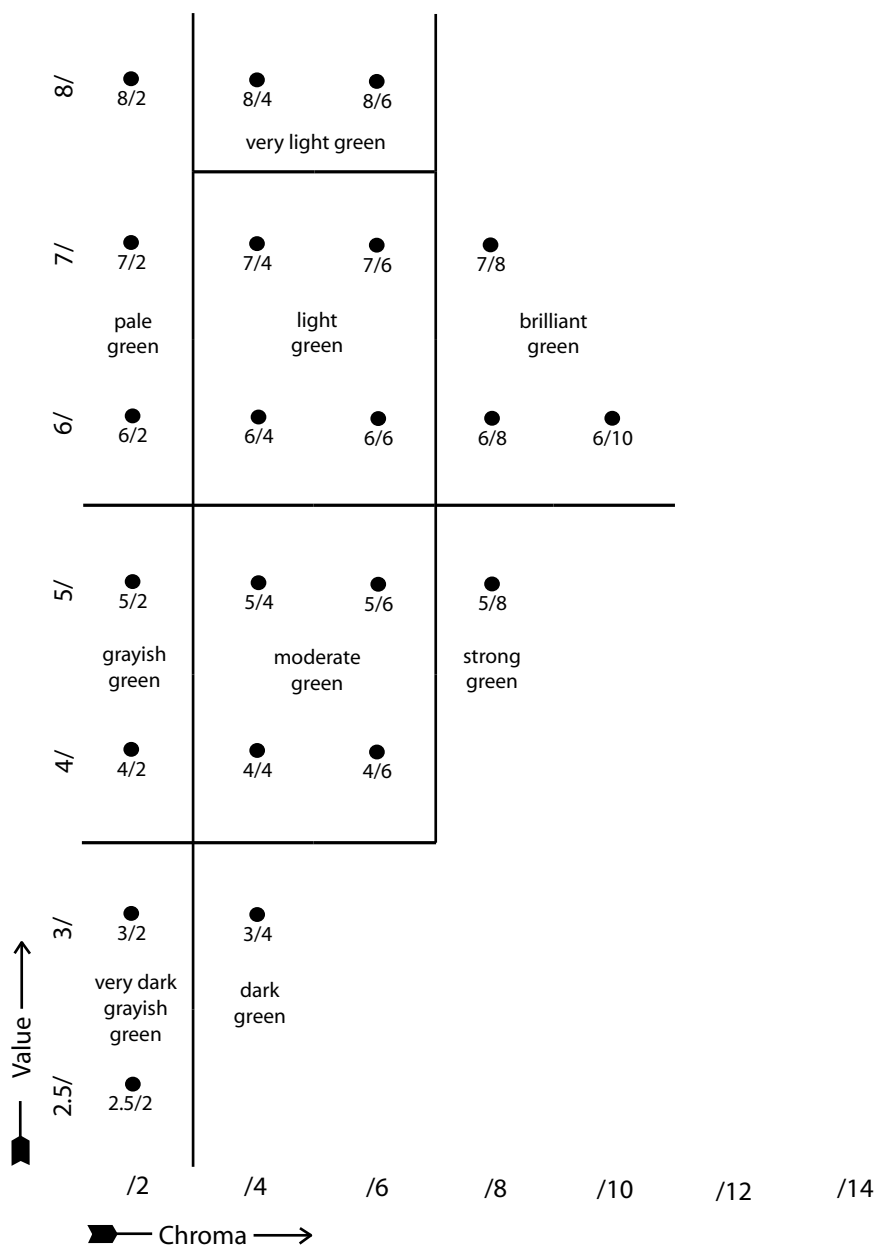
Hue: 5Y



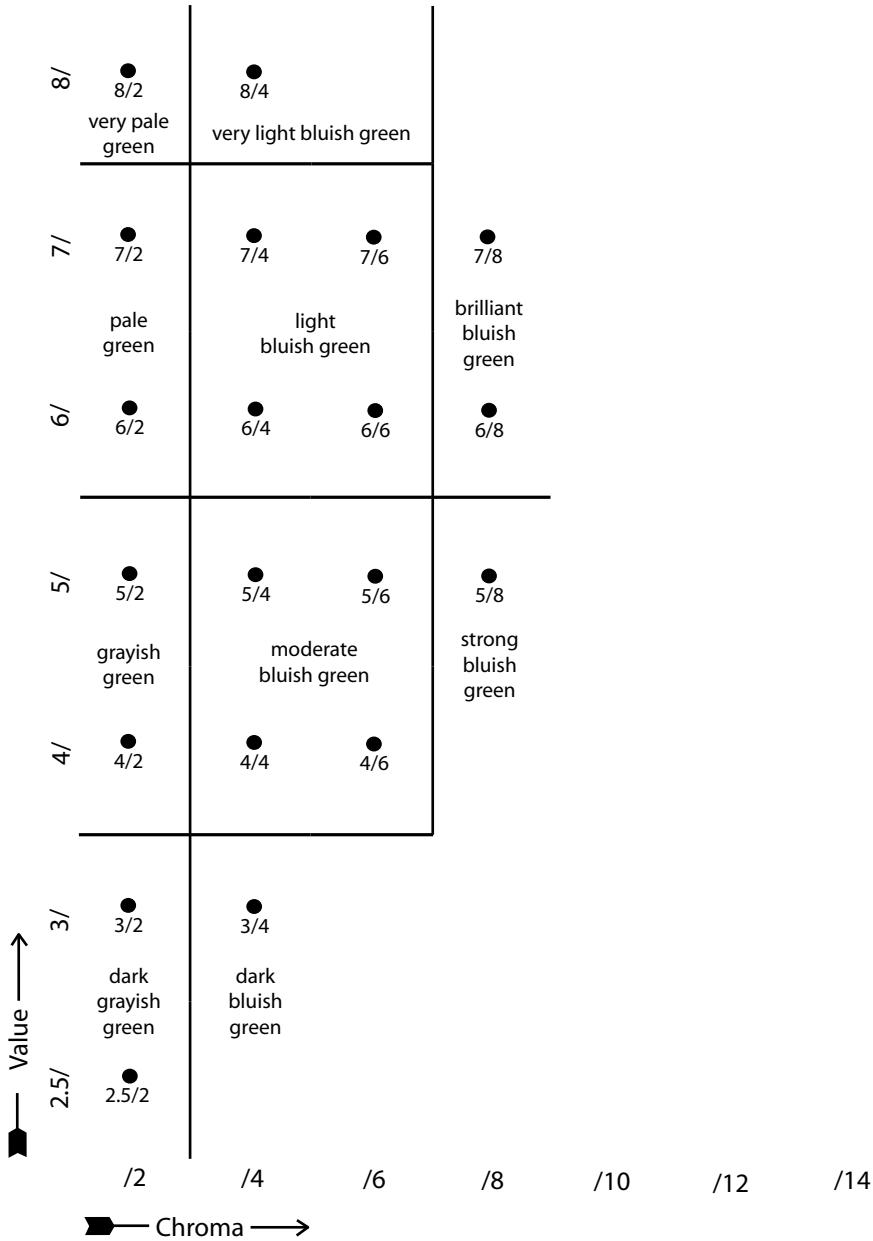
Hue: 5GY



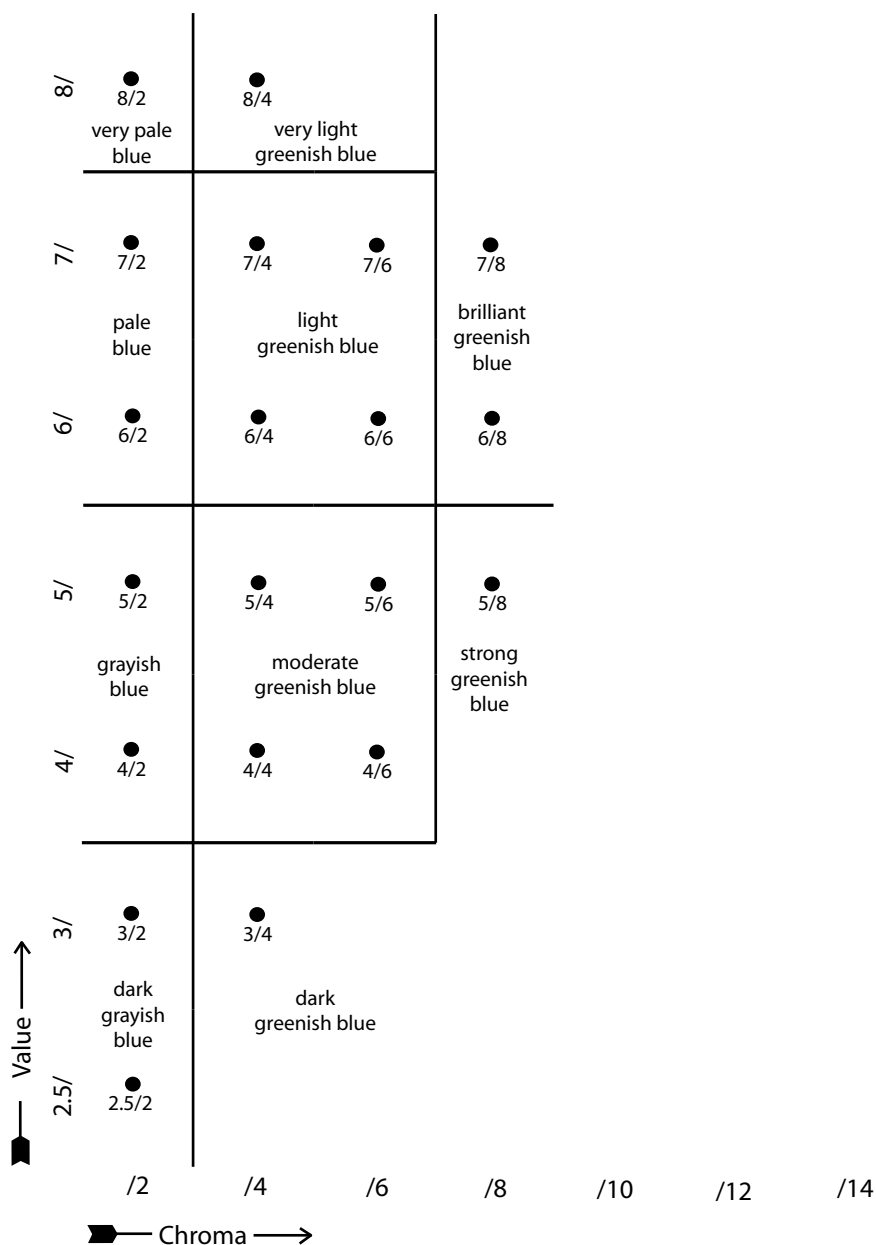
Hue: 5G



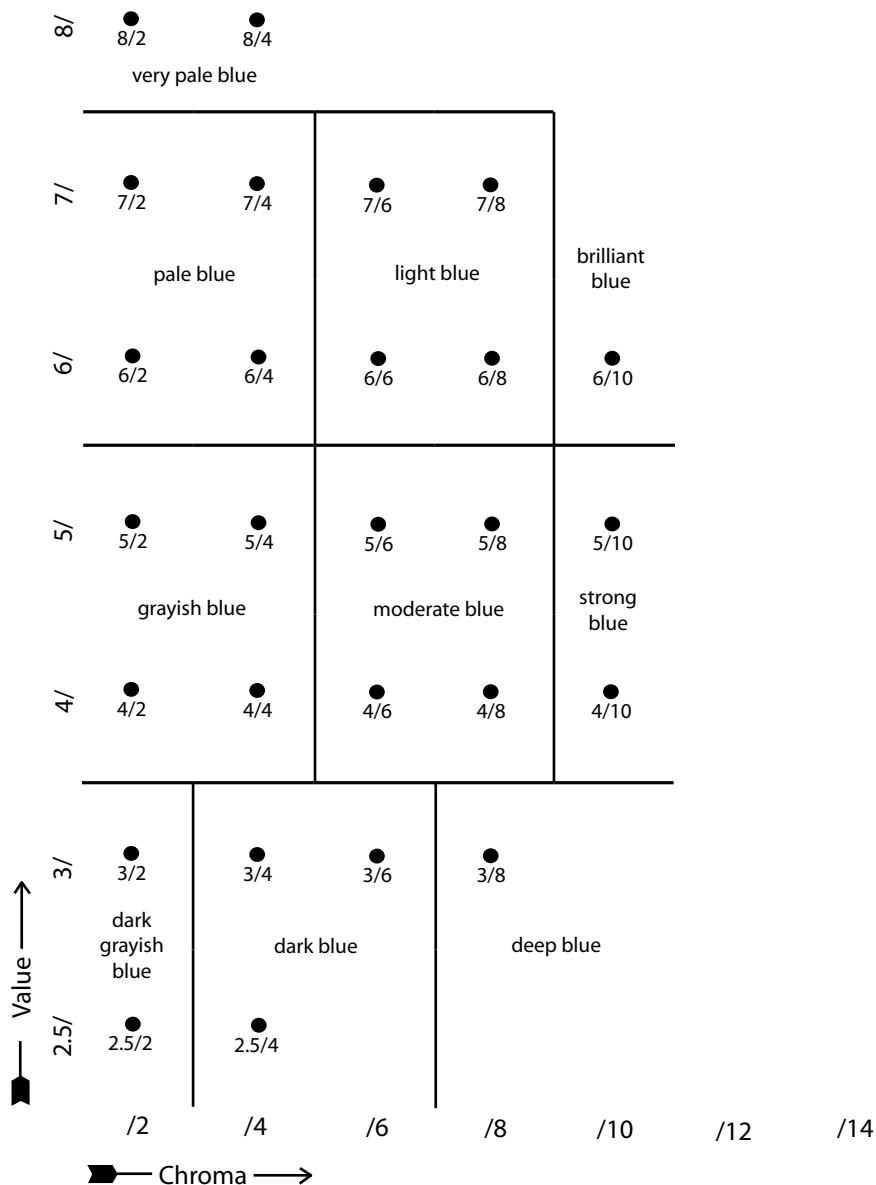
Hue: 5BG



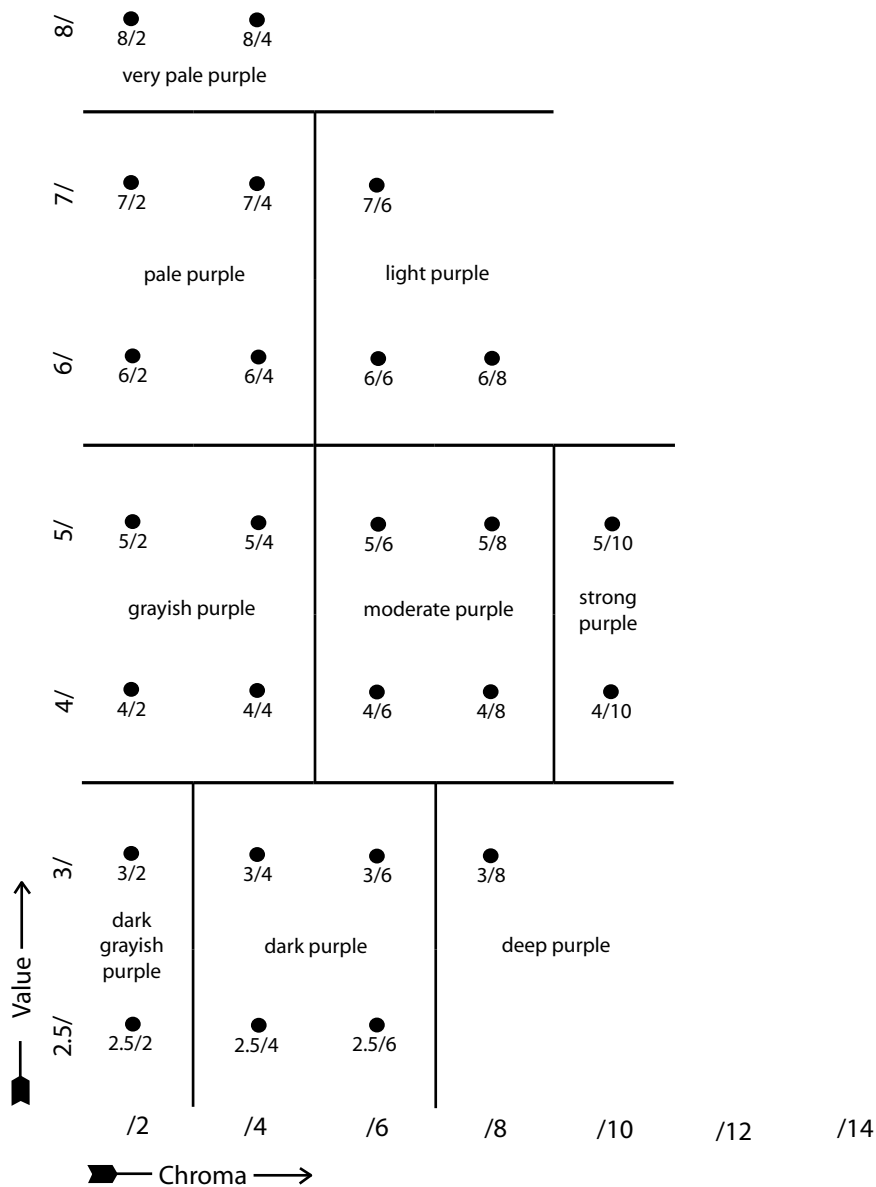
Hue: 5B



Hue: 5PB



Hue: 5P



Hue: 5RP

